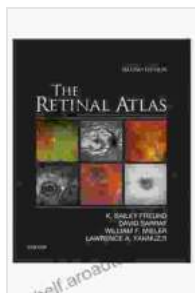


# The Retinal Atlas: A testament to Harriet Earle's Pioneering Spirit in Ophthalmology

In the annals of medical history, Harriet Earle stands as a beacon of inspiration, a trailblazing physician who shattered societal barriers and made invaluable contributions to the field of ophthalmology. Her groundbreaking work, captured in the seminal publication 'The Retinal Atlas,' remains a testament to her unwavering dedication to the study of the eye and its diseases.



## The Retinal Atlas E-Book by Harriet E.H. Earle

★★★★☆ 4.1 out of 5

Language : English

File size : 316156 KB

Text-to-Speech : Enabled

Enhanced typesetting: Enabled

Print length : 1185 pages

Screen Reader : Supported

FREE

DOWNLOAD E-BOOK



As the first woman to practice ophthalmology in the United States, Earle faced countless obstacles and prejudices throughout her career. Yet, her resilience and determination propelled her forward, earning her recognition as one of the most influential figures in the field. 'The Retinal Atlas' stands as a testament to her pioneering spirit and tireless pursuit of knowledge.

## Early Life and Education

Harriet Newell Haskell was born on July 14, 1858, in Southbridge, Massachusetts. Growing up in a family of modest means, she developed a keen interest in science and medicine from a young age. Despite the prevailing social norms that discouraged women from pursuing higher education, Earle's determination led her to enroll at Boston University School of Medicine in 1880.

During her medical studies, Earle excelled in her coursework and demonstrated a particular aptitude for ophthalmology. She graduated with honors in 1884 and embarked on a residency at the Massachusetts Eye and Ear Infirmary, becoming the first woman to hold such a position at the prestigious institution.

### **Pioneering Work in Ophthalmology**

Upon completing her residency, Dr. Earle established her own practice, specializing in ophthalmic diseases. Her exceptional clinical skills and unwavering commitment to her patients quickly earned her a reputation as one of the most sought-after ophthalmologists in Boston. However, her path was not without its challenges. As a woman practicing in a predominantly male-dominated field, she faced skepticism and resistance from some of her colleagues.

Undeterred, Earle persisted in her pursuit of excellence, devoting herself to the study of retinal diseases. She recognized the need for accurate and detailed documentation of the various conditions affecting the retina, the light-sensitive layer at the back of the eye. Inspired by the work of German ophthalmologists, she embarked on a meticulous project to create a comprehensive atlas illustrating the pathology of the retina.

## **The Retinal Atlas: A Groundbreaking Publication**

Over the course of several years, Dr. Earle meticulously examined and documented hundreds of retinal specimens, using advanced microscopy techniques and precise illustrations. The result of her painstaking efforts was the publication of 'The Retinal Atlas' in 1899. This landmark work consisted of 120 full-color plates depicting the microscopic appearance of various retinal diseases, including macular degeneration, diabetic retinopathy, and glaucoma.

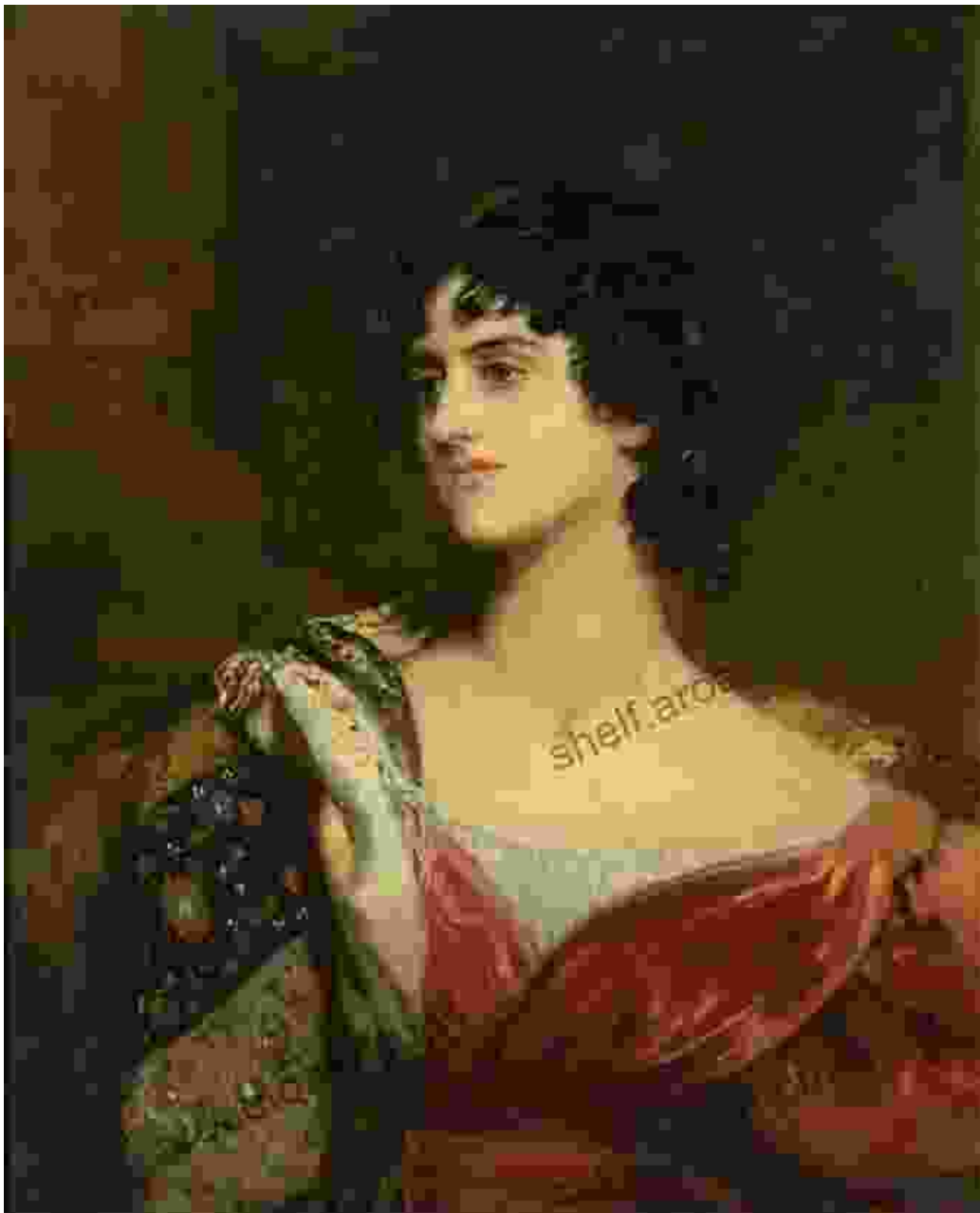
'The Retinal Atlas' was a groundbreaking achievement that revolutionized the field of ophthalmology. It provided ophthalmologists with an unprecedented visual reference guide for diagnosing and treating retinal diseases. The atlas became an essential tool for medical practitioners worldwide, facilitating accurate diagnoses and improved patient outcomes.

## **Legacy and Recognition**

Dr. Harriet Earle's contributions to ophthalmology extended far beyond 'The Retinal Atlas.' She was instrumental in founding the American Ophthalmological Society and served as its first female president. Her work helped elevate the standards of ophthalmic practice and paved the way for subsequent generations of women in medicine.

In recognition of her groundbreaking achievements, Dr. Earle received numerous awards and accolades. She was the first woman to be elected to the National Academy of Sciences and was awarded the prestigious Friedenwald Medal by the American Ophthalmological Society. Her legacy continues to inspire and empower aspiring scientists and physicians to this day.

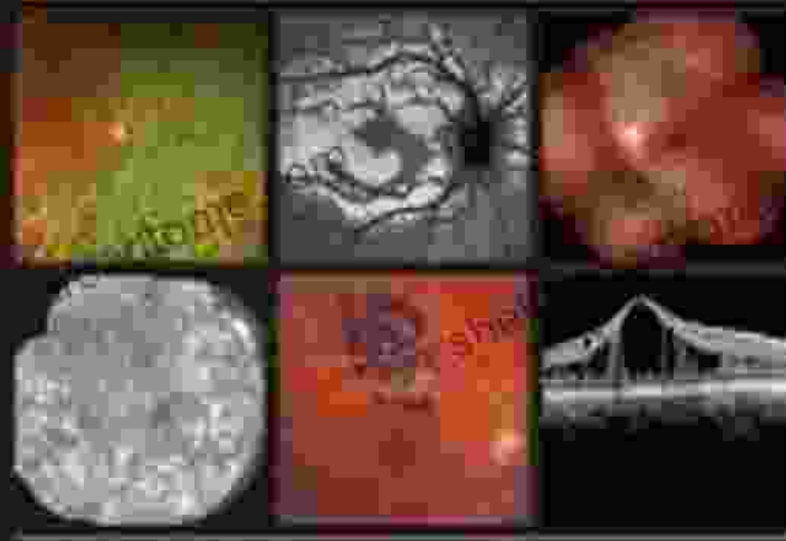
Harriet Earle's 'The Retinal Atlas' stands as a testament to her remarkable perseverance, pioneering spirit, and unwavering dedication to the field of ophthalmology. Her groundbreaking work transformed the diagnosis and treatment of retinal diseases, leaving a lasting impact on the lives of countless individuals. As we celebrate her legacy, let us draw inspiration from her unwavering determination and continue to push the boundaries of medical knowledge and innovation.



ExpertConsult.com Downloadable Content

SECOND EDITION

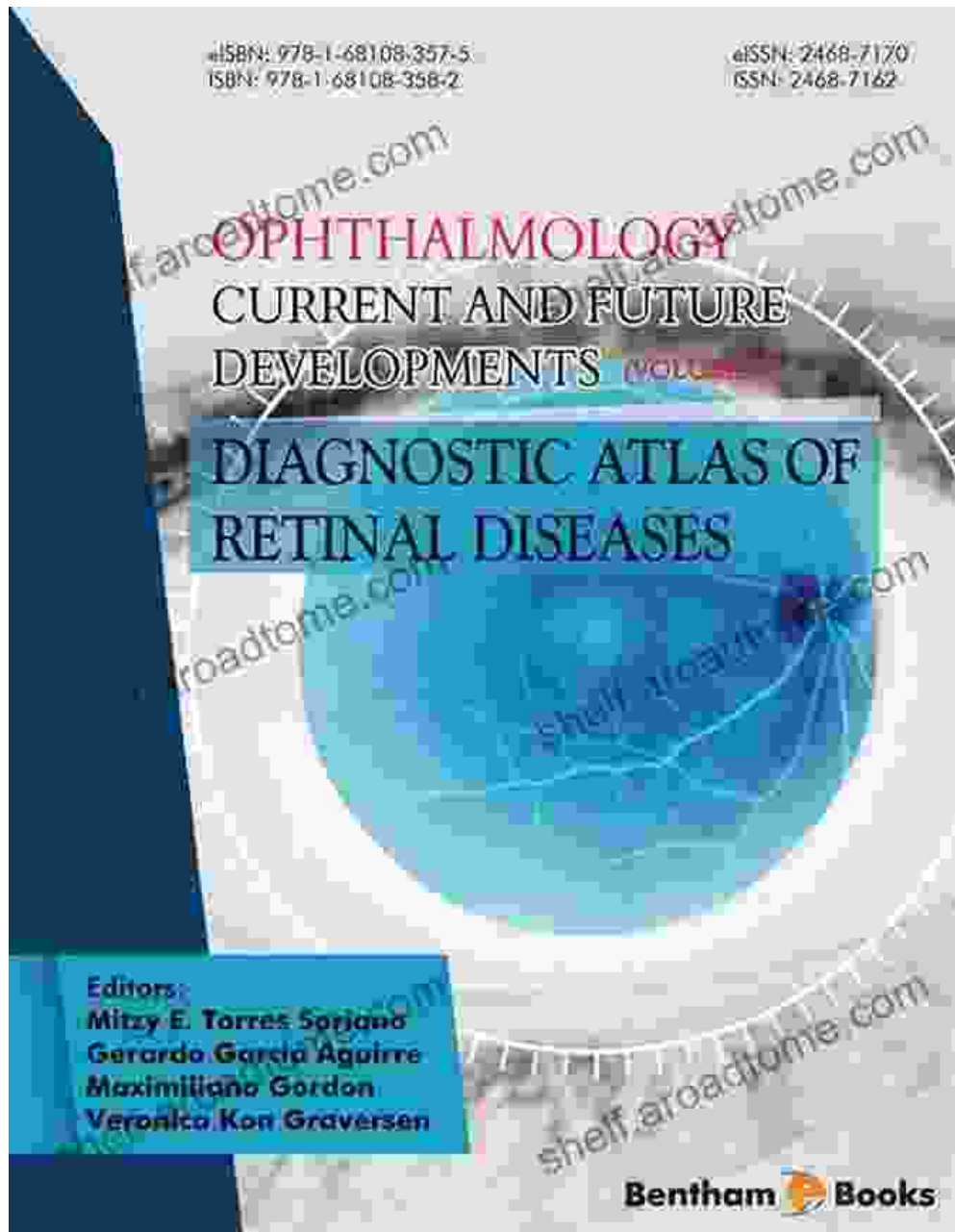
# THE RETINAL ATLAS



K. BAILEY FREUND  
DAVID SARRAF  
WILLIAM F. MIELER  
LAWRENCE A. YANNUZZI

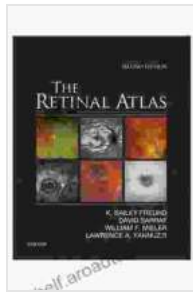
FLUOR

The cover of Harriet Earle's seminal work, 'The Retinal Atlas,' published in 1899.



Immerse yourself in the life and groundbreaking work of Harriet Earle by exploring 'The Retinal Atlas' and other resources dedicated to her legacy. Discover the fascinating journey of this pioneering woman who shattered barriers and left an indelible mark on the field of ophthalmology.

[Explore Resources](#)



## The Retinal Atlas E-Book by Harriet E.H. Earle

★★★★☆ 4.1 out of 5

Language : English

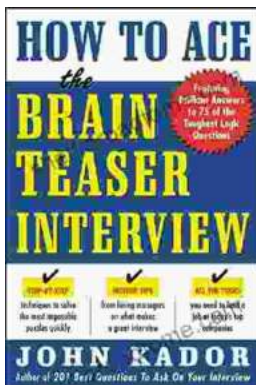
File size : 316156 KB

Text-to-Speech : Enabled

Enhanced typesetting: Enabled

Print length : 1185 pages

Screen Reader : Supported



## How to Ace the Brainteaser Interview: The Ultimate Guide

Welcome to the ultimate guide on how to ace the brainteaser interview. In today's competitive job market, brainteasers have become an increasingly...



## The Collected Works Of Homen Borgohain: A Literary Treasure Unveiled

In the realm of Assamese literature, there exists a towering figure whose words have left an indelible mark on the hearts and minds...